

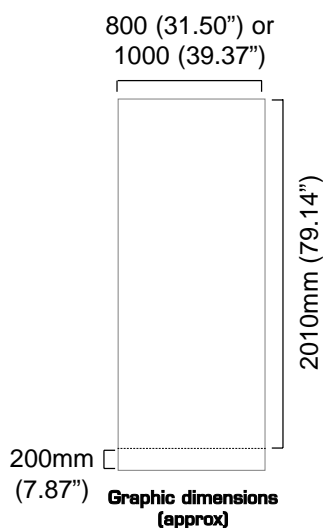
# Eco Roller Banner



*A lightweight economy roller banner with slim base and bungee pole making it very compact, complete with a twist out foot for extra stability.*

## features & benefits

- Lightweight components
- Reusable spring loaded rail clamp system for easy graphic application
- Hook/loop fastening quick change graphic application
- Twist out stabilising foot for extra stability
- Available in anodised silver
- 800mm and 1000mm graphic widths
- Includes quality padded carry bag



### hardware specifications

800 Hardware Dimensions (mm):  
2110 (h) x 830 (w) x 445 (d) approx.  
83.10" (h) x 32.70" (w) x 17.52" approx.  
(Depth dimension refers to twist out foot)

Weight:  
2.5kg (5.5lbs) approx  
(including carry bag)

### graphic specifications

Visible Graphic Dimensions (mm):  
2010 (h) x 800 or 1000 (w) approx  
79.14" (h) x 31.50" or 39.37" (w) approx

Substrate:  
Add 200mm (7.87") to base of graphic to  
allow for roller mechanism.  
Recommended material thickness  
225 - 300 Microns (8.86 - 11.81 Mils)

### additional info

Included in kit:  
Top rail, base, bungee pole  
set and carry bag

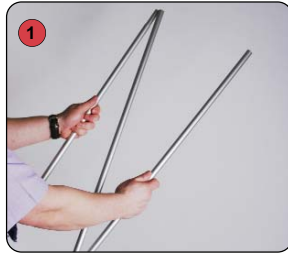
Availability:  
Anodised silver

# Assembly Instructions

## Banner stand assembly



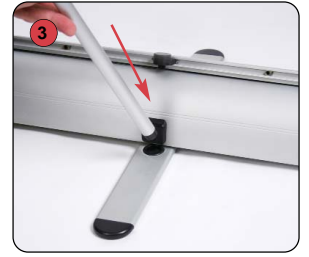
Kit includes: Top rail, base, bungee pole set and carry bag



1 Assemble the bungee pole set.



2 Open out the stabilising foot.



3 Fit the bungee pole into the stabilising foot.



4 Lift the top rail to raise the graphic from the base.



5 Lean the banner stand backwards and continue to extend the graphic.

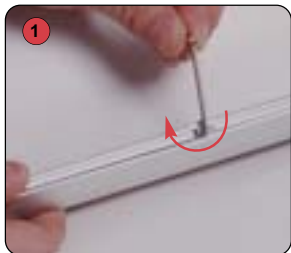


6 Secure the top rail cup onto the bungee pole.

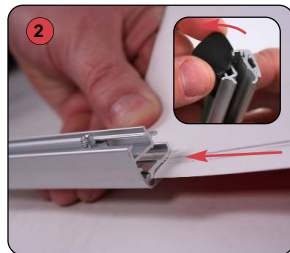


**Hold the Top rail whilst lowering the banner, (do not drop) to prevent damage to the graphic.**

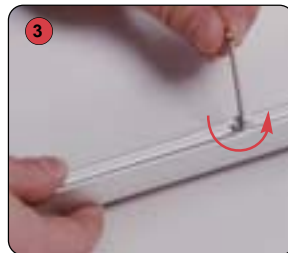
## Graphic attachment instructions



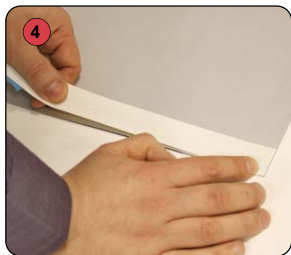
1 Loosen the top rail screws using a 2.5mm allen key.



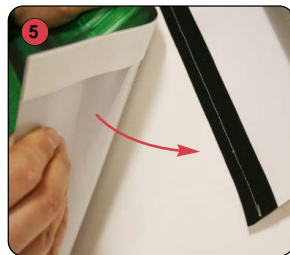
2 Rotate open the top rail end caps, then squeeze open the grip rail. Slide the graphic squarely into the rail.



3 Tighten the top rail screws.



4 Align and adhere hook fastener squarely to the bottom shorter edge of the graphic. (attach to back of graphic)



5 Securely attach the graphic to the loop fastener on the banner leader strip.



6 Whilst holding the top rail remove the locking pin from the base and gently allow the graphic to retract.

**After fitting, the graphic should be left for 24 hours before use, to ensure the adhesive bonds sufficiently.**

**Note: Opening the banner stand base may invalidate the product warranty.**